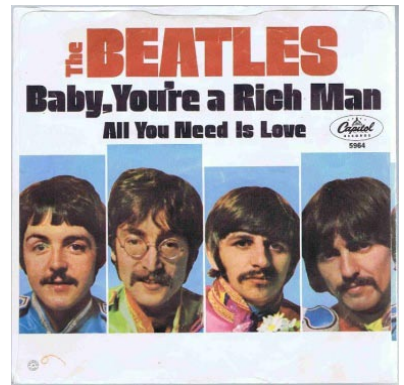
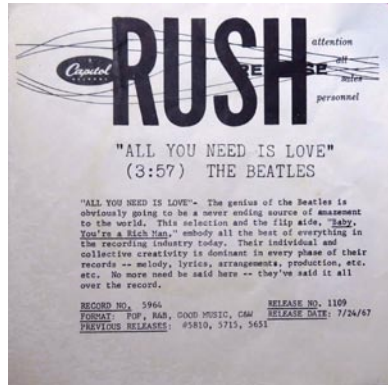


"All You Need is Love"/"Baby, You're a Rich Man"

Label 62dj

Capitol P-5964
Yellow label with promotional print.



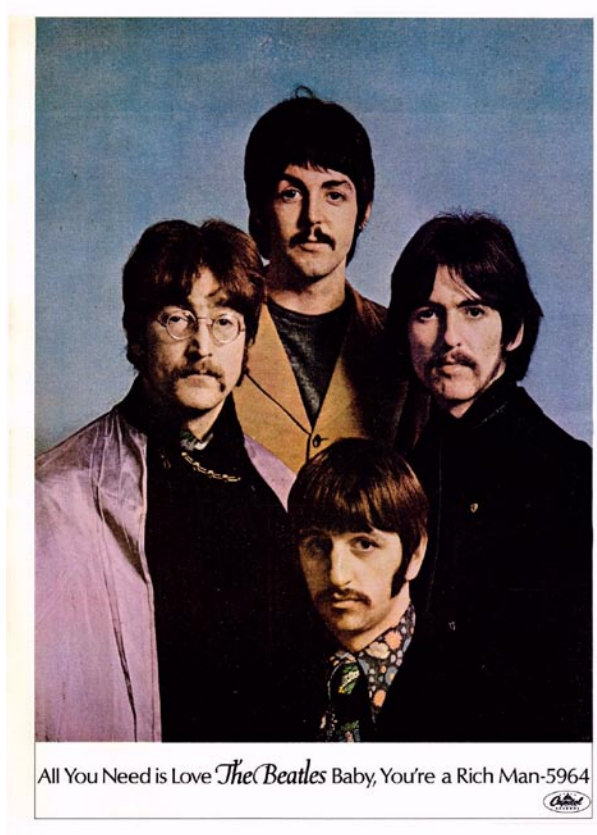
62dj (Bert-Co print)
Factories: Los Angeles

Label 62-01

Capitol 5964
Orange/yellow swirl label without subsidiary print.
No comma in B-side song title.
First pressing



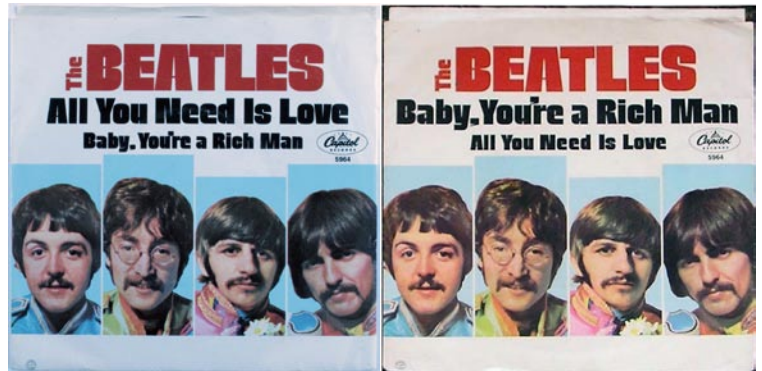
62-01A (Keystone print)
Factories: Scranton, Decca Gloversville



62-01B (Bert-Co print)
Factories: Los Angeles

Label 62-02

Capitol 5964
Orange/yellow swirl label without subsidiary print.
Comma in B-side song title.



62-02A (Keystone print)
Factories: Scranton, Decca Gloversville

Picture sleeve PS1A (east coast):

The sleeve is cut straight across the top on both sides.
PS1A(a) – The open side has “All You Need is Love” at the top.
PS1A(b) – The open side has “Baby, You’re a Rich Man” at the top.

Picture sleeve PS1B (west coast):

The sleeve is tab cut.
PS1B(a) – The tab side has “All You Need is Love” at the top.
PS1B(b) – The tab side has “Baby, You’re a Rich Man” at the top.



Label 62xw

Capitol 5964
Orange/yellow swirl label with subsidiary print in white.
October, 1968, to March/April, 1969
Factory: Los Angeles
Small print.



Label 69

Capitol 5964
Red/orange target label with dome logo.
March/April, 1969, to July, 1969
Exists?

TOP 20 Spotlights—Predicted to reach
THE BEATLES—ALL YOU NEED IS LOVE (Prod. George Martin) (Writers: Lennon-McCartney) (Maelen, BMI)—**BABY, YOU'RE A RICH MAN** (Prod. George Martin) (Writers: Lennon-McCartney) (Maelen, BMI)—Top side is a smooth rhythm offering that must be heard to the end for traces of “In the Mood,” “Greensleeves” and “She Loves You,” while the flip is an Eastern-flavored rocker with an infectious beat and intricate lyric.
Capitol 5964

Label 69a

Capitol 5964

Red/orange target label with "C" logo. There is no white dot on the backdrop behind the Capitol logo.

July, 1969, to October, 1970

Factory: Scranton

Unusual print

Label may have "TM" next to the Capitol logo, or may have ® under the "l" of "Capitol" or to its right.



Label 21d

Capitol 5964

Red/orange target label with "C" logo. There is a white dot on the backdrop behind the Capitol logo.

October, 1970, to May, 1971

Factory: Scranton

Unusual print



Label bs

Apple 5964

Apple label with black star on the full side

Factory: Los Angeles

May, 1971, to June, 1971



Label af

Apple 5964

Apple label with "MFD. BY APPLE" on the full side

Factory: Los Angeles

Label may be flat or glossy. Later copies have "MFD. BY APPLE" on both sides.

Factory: Jacksonville

Factory: Winchester

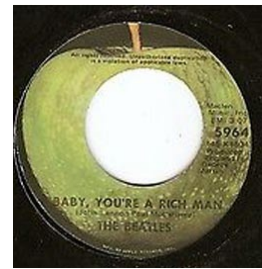
Label may be flat or glossy.

Copies pressed in 1974-5 have "Mastered by Capitol" in the matrix.



Label ar

Apple 5964
Apple label with rights information on one or both sides.
Factory: Los Angeles arL
Rights information appears at the top part of the A-side label.



Factory: Jacksonville arJ
As above, but darker.

Label 72r

Capitol 5964
Orange label with rights disclaimer
Factory: Los Angeles
"Capitol" is in olive green on LA copies.
Factory: Winchester
Exists?



Label 78

Capitol 5964
Purple label with large logo; rim text starts with "MFD."
Factory: Jacksonville
With "TIME" on label
Factory: Winchester
Without "TIME" on label



Label SL81s

Capitol Star Line A-6300
Blue Star Line label with A- prefix and "stereo" on labels.
Jacksonville pressings from this point on have a voice saying "seven" at the beginning of "Baby, You're a Rich Man."



Label SL81m

Capitol Star Line A-6300
Blue Star Line label with A- prefix and "mono" on labels.
Factories: Winchester



Label SL81x

Capitol Star Line X-6300
Blue Star Line label with X- prefix and "mono" on labels.
Factories: Los Angeles; Jacksonville; Winchester



Label SL83

Capitol Star Line X-6300
Rainbow label with rim print in color band.
Factories: Los Angeles, Winchester, Specialty



Label SL88

Capitol Star Line X-6300
Purple label with small logo; rim text starts with "MANUFACTURED."
Factory: Specialty
No copies are known

Label 88

Capitol/Cema S7-17693
Purple label with small logo; rim text starts with "MANUFACTURED."
Factory: Specialty
Pink vinyl. The A-side is the 1987 (stereo) digital remaster, combined into mono. The B-side is the original 1967 version in mono.



BEATLES' CUT TO BE SEEN ON GLOBAL TV

LONDON — The Beatles will be seen recording a new song in a two-hour live television show screened globally on June 25. The program will be shown in 31 countries with an estimated audience of 500 million.

The BBC will transmit the show, titled "Our World" in the UK, and more than 100 U. S. stations will broadcast it across the United States.

The program is being transmitted via three U. S. communications satellites and one Russian satellite.

The Beatles will be seen recording a number which John Lennon and Paul McCartney have written especially for the program. If suitable, the number will be issued as the Beatles' next single.