

The Beatles' Second Album

First mention in trade magazines: June 11, 1964.

Label 62-01

Mono

T-2080

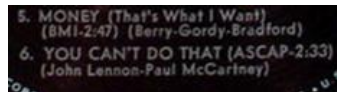
First pressing – First two songs on side two have publishing credits reading simply (BMI) and (ASCAP), respectively.

01A (Keystone print)

Factories: Scranton, RCA Indianapolis, RCA Rockaway; Decca Gloversville

A(i) – The song time for “You Can’t Do That” is shown as 2:23.

A(ii) -- The song time for “You Can’t Do That” has been corrected to 2:33.



Possible covers:

Blue stamp reading “FREE PROMOTIONAL ALBUM NOT TO BE SOLD”, Scranton
“She Loves You” and “Roll Over Beethoven” in olive green print on front cover.

01B (Bert-Co print)

Factories: Los Angeles, RCA Hollywood (“W”)



Possible covers:

“She Loves You” and “Roll Over Beethoven” in olive green print on front cover.
Black stamp reading “Reddi Wip. PROMOTIONAL – NOT FOR SALE”, Los Angeles

Stereo

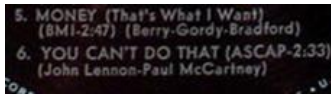
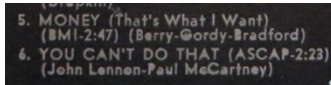
ST-2080

01A (Keystone print)

Factory: Scranton

A(i) – The song time for “You Can’t Do That” is shown as 2:23.

A(ii) -- The song time for “You Can’t Do That” has been corrected to 2:33.



Possible covers:

“She Loves You” and “Roll Over Beethoven” in olive green print on front cover.

01B (Bert-Co print)

Factory: Los Angeles



The word “STEREO” is in narrow print with narrow horizontal spacing.

Possible covers:

“She Loves You” and “Roll Over Beethoven” in olive green print on front cover.



Label 62-02

Mono

T-2080

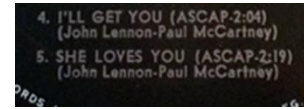
The first two songs on side two have song times.

“She Loves You” is credited to ASCAP, as it is on the first issue.

Circa mid-1964.

02A (Keystone print)

Factory: Scranton, Decca Gloversville



Possible covers:

“She Loves You” and “Roll Over Beethoven” in olive green print on front cover.

Label 62-03

Mono

T-2080

The first two songs on side two have song times.

The credit for “She Loves You” is shown as BMI.

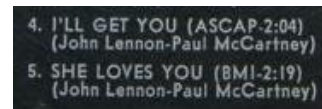
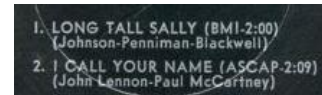
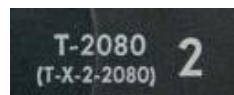
Circa mid-1964 to late 1964.

03A (Keystone print)

Factory: Scranton, Decca

A(i) -- The middle of the T in the catalog number is over the hyphen before the X in the matrix number.

A(ii) -- The middle of the T in the catalog number is over the left side of the X in the matrix number.



Possible covers:

“She Loves You” and “Roll Over Beethoven” in olive green print on front cover.

Stereo

ST-2080

03A (Keystone print)

Factory: Scranton



Possible covers:

“She Loves You” and “Roll Over Beethoven” in olive green print on front cover.

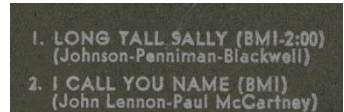
Label 62-04

Stereo

ST-2080

First song on side two lists the song time. The second song credit reads simply (BMI). The second song title is misspelled “I Call You Name.” The credits for “You Can’t Do That,” “She Loves You,” and “I’ll Get You” are shown as BMI.

Circa early-mid 1965.



04A (Keystone print)



Possible covers:

“She Loves You” and “Roll Over Beethoven” in olive green print on front cover.

Label 62-05

Stereo

ST-2080

05A (Keystone)

The first song on side two lists the song time. The second song credit reads simply (BMI). The second song title is spelled correctly.

Circa mid-1965 to 1968.

Factories: Scranton, Jacksonville, Columbia Pitman



Possible covers:

"She Loves You" and "Roll Over Beethoven" in olive green print on front cover.

05B (Bert-Co)

The first two song credits on side two read simply (BMI). The word "STEREO" is in narrow print with wide horizontal spacing. All publishing credits are BMI except "She Loves You."

Factories: Los Angeles



Possible covers:

"She Loves You" and "Roll Over Beethoven" in olive green print on front cover.

05J (Jacksonville)

The first two song credits on side two read simply (BMI).

Factories: Jacksonville, Columbia

A(i) -- The titles are vertically spaced immediately under ST-2080 and the word STEREO.

A(ii) – There is a large vertical space between ST-2080 and the song titles.



Possible covers:

“She Loves You” and “Roll Over Beethoven” in dull olive green print on front cover.

Label 62x

Capitol

ST-2080

Rainbow label with subsidiary information above color band.

STEREO in wide print; song time for first song on Side 2.

Factory: Scranton

STEREO in tall, thin print; slick label

Factory: Scranton

STEREO in tall, thin print; flat label

Factory: Los Angeles, Columbia Santa Maria

Unusual Typeface

Factory: Jacksonville (two subtypes)

01xJ(i) has the song numbers on side 1 under the second E of STEREO.

01xJ(ii) has the song numbers on side 1 under the R of STEREO.

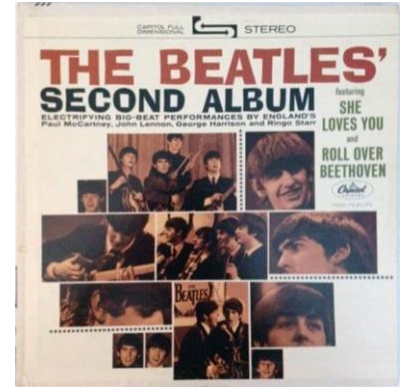


Possible covers: “She Loves You” and “Roll Over Beethoven” in olive green print on front cover.



Label 62-RC1

Capitol ST-8-2080
 Rainbow label with "manufactured under license"
 Back cover slick, folded around to the front, has the catalog number at the top right. Pressed by Decca-Pinckneyville between January and September, 1969.



Label 69

Capitol ST-2080
 Lime green label with "C" logo.
 Stereo at left. Titles in upper and lower case.
 Factory: Los Angeles (69L)
 Factory: Winchester (69W)
 Unusual typeface. STEREO in all caps.
 Factory: Jacksonville (69J)
 Label 69J(i) has STEREO above Side 1.
 Label 69J(ii) has STEREO just below Side 1.



Label may have "TM" next to the Capitol logo, or may have ® under the "l" of "Capitol."

Possible covers:

"She Loves You" and "Roll Over Beethoven" in olive green print on front cover.

May be found with or without RIAA Gold Record Award in red print.



Label 69-RC1

Capitol

ST-8-2080

Lime green label with "C" logo and "manufactured under license"

Pressed by Decca-Pinckneyville between September, 1969, and c. late 1969.



Label ac1

Apple/Capitol

ST-2080

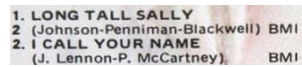
Apple label with Capitol logo



Factory: Los Angeles

Side two label has an additional "2" next to the author credit for song 1.

Possible covers: "She Loves You" and "Roll Over Beethoven" in olive green print on front cover.



Factory: Jacksonville

Side two label has no additional "2."



Possible covers: "She Loves You" and "Roll Over Beethoven" in emerald green print on front cover; gold record award.

Label af1

Apple

ST-2080

Apple label with "MFD. BY APPLE" on the full side

Factory: Los Angeles

Label may be flat or glossy.

Copies pressed before 1974 have an additional "2" on side two; copies pressed from 1974 do not have this.

Factory: Jacksonville

Label may be glossy and yellowish or flat.

No copies have the additional "2" found on LA and Winchester copies.

Factory: Winchester

Label may be flat or glossy.

Copies pressed before 1974 have an additional "2" on side two; copies pressed from 1974 do not have this.

Copies pressed in 1974-5 have "Mastered by Capitol" in the matrix.

Possible covers:

"She Loves You" and "Roll Over Beethoven" in olive green print on front cover; gold record award.

"She Loves You" and "Roll Over Beethoven" in emerald green print on front cover; gold record award.



Label as1

Apple

ST-2080

Apple label with "MFD. BY APPLE" on the sliced side

Additional "2" on side two. Pressed in late 1973 and early 1974.

Factory: Winchester



Possible covers:

"She Loves You" and "Roll Over Beethoven" in olive green print on front cover; gold record award.

Label ar1

Apple

ST-2080

Apple label with rights information on one or both sides.

Pressed from September, 1975, to January, 1976.

Factory: Los Angeles

Rights information appears across the label in black.

Rights information appears below the manufacturing statement in the rim text.

Factory: Jacksonville

Rights information appears across the label in black.

Rights information appears in the rim around the right side of the label.

Factory: Winchester

Rights information appears below the manufacturing statement in the rim text.



Possible covers:

"She Loves You" and "Roll Over Beethoven" in olive green print on front cover; gold record award.

"She Loves You" and "Roll Over Beethoven" in emerald green print on front cover; gold record award.



Label 72r

Capitol ST-2080

Orange label with rights disclaimer

Factory: Los Angeles

“Capitol” at bottom has a greenish tint, compared to tan for Winchester.

Factory: Winchester

Factory: MCA Pinckneyville, Jacksonville

“Stereo” at left; others have a large side number.



Possible covers:

“She Loves You” and “Roll Over Beethoven” in olive green print on front cover; gold record award.

“She Loves You” and “Roll Over Beethoven” in emerald green print on front cover; gold record award.

Posterboard cover.



Label 78

Capitol ST-2080

Purple label with large logo

Factory: Los Angeles

Factory: Jacksonville

Factory: Winchester



Label 83

Capitol ST-2080

Rainbow label with print in color band.

Factories: Jacksonville, Winchester

Factory: Specialty



Posterboard cover.

**It's Here!
It's on Capitol!!
and It's ALL Beatles!!!**

THE BEATLES'
SECOND ALBUM featuring
SHE LOVES YOU
and
ROLL OVER BEETHOVEN

ELECTRIFYING BIG-BEAT PERFORMANCES BY ENGLAND'S
Paul McCartney, John Lennon, George Harrison and Ringo Starr



Capitol RECORDS

(S) T 2080

For the first time on any album their smash, number one single "She Loves You" and "Roll Over Beethoven." PLUS other great tunes ALL by the fantastic Beatles. Their first Capitol Album broke all sales records everywhere. And this one's going to break even THOSE records. THE Beatles albums are on Capitol.

And THE Beatles singles are too. "Can't Buy Me Love" b/w "You Can't Do That" (#5150) is an unprecedented hit, just released on Capitol. Within 2 weeks of release "Can't Buy Me Love" was #1 on the Billboard Chart — and your #1 money maker!



HAVE YOUR BUYER CALL CRDC AND ORDER IMMEDIATELY.

