

Pressings of Early Columbia Masterworks Albums

Set 1 to Set 8

Label 23 – Colored background with Columbia and flags
 Front cover has embossed gold print and “notes” logo.
 Columbia Records is centered.



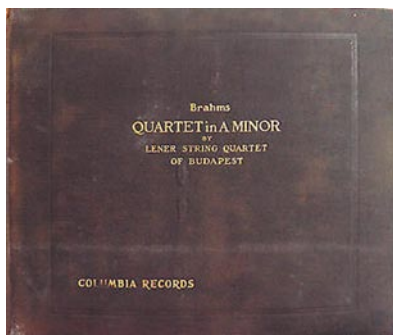
Set 18 (9?) to Set 31

Label 25 – Notes and Columbia in circle at top; REG US PAT. OFF.
 Columbia across the middle of the label between two closed curves.
 Three patent dates are in the **bottom** line of rim text.
 Front cover has embossed gold print.
 Columbia Records is at the bottom left corner.



Set 32 to Set 36

Label 25A – Notes and Columbia in circle at top; REG US PAT. OFF.
 Columbia across the middle of the label between two closed curves.
 Two patent dates are in the **top** line of rim text.
 Front cover has embossed gold print.
 Columbia Records is at the bottom left corner.



The World's Greatest Library of Music in Record Form
COLUMBIA FINE ART SERIES OF MUSICAL MASTERWORKS

These Masterworks Sets Are Now Available: Others Are Being Added Constantly

1897-1898	1899-1900	1901-1902	1903-1904	1905-1906	1907-1908	1909-1910	1911-1912	1913-1914	1915-1916	1917-1918	1919-1920	1921-1922	1923-1924	1925-1926	1927-1928	1929-1930	1931-1932	1933-1934	1935-1936	1937-1938	1939-1940	1941-1942	1943-1944	1945-1946	1947-1948	1949-1950	1951-1952	1953-1954	1955-1956	1957-1958	1959-1960	1961-1962	1963-1964	1965-1966	1967-1968	1969-1970	1971-1972	1973-1974	1975-1976	1977-1978	1979-1980	1981-1982	1983-1984	1985-1986	1987-1988	1989-1990	1991-1992	1993-1994	1995-1996	1997-1998	1999-2000	2001-2002	2003-2004	2005-2006	2007-2008	2009-2010	2011-2012	2013-2014	2015-2016	2017-2018	2019-2020	2021-2022	2023-2024	2025-2026	2027-2028	2029-2030	2031-2032	2033-2034	2035-2036	2037-2038	2039-2040	2041-2042	2043-2044	2045-2046	2047-2048	2049-2050	2051-2052	2053-2054	2055-2056	2057-2058	2059-2060	2061-2062	2063-2064	2065-2066	2067-2068	2069-2070	2071-2072	2073-2074	2075-2076	2077-2078	2079-2080	2081-2082	2083-2084	2085-2086	2087-2088	2089-2090	2091-2092	2093-2094	2095-2096	2097-2098	2099-2100
-----------	-----------	-----------	-----------	-----------	-----------	-----------	-----------	-----------	-----------	-----------	-----------	-----------	-----------	-----------	-----------	-----------	-----------	-----------	-----------	-----------	-----------	-----------	-----------	-----------	-----------	-----------	-----------	-----------	-----------	-----------	-----------	-----------	-----------	-----------	-----------	-----------	-----------	-----------	-----------	-----------	-----------	-----------	-----------	-----------	-----------	-----------	-----------	-----------	-----------	-----------	-----------	-----------	-----------	-----------	-----------	-----------	-----------	-----------	-----------	-----------	-----------	-----------	-----------	-----------	-----------	-----------	-----------	-----------	-----------	-----------	-----------	-----------	-----------	-----------	-----------	-----------	-----------	-----------	-----------	-----------	-----------	-----------	-----------	-----------	-----------	-----------	-----------	-----------	-----------	-----------	-----------	-----------	-----------	-----------	-----------	-----------	-----------	-----------	-----------	-----------	-----------

COLUMBIA PHONOGRAPH COMPANY, 1819 Broadway, New York

Columbia NEW PROCESS **Records**

Set 37 to Set 41

Label 25B – Notes and Columbia in circle at top
Two lines of patents appear under the notes logo.
Top line of rim print ends with a date in May, 1923.
Front cover has embossed gold print.
Columbia Records is at the bottom left corner.



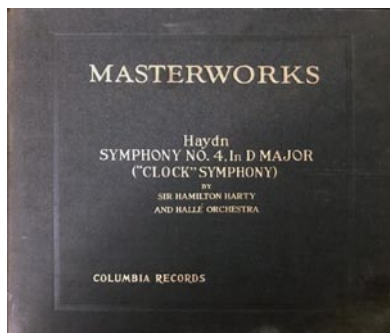
Set 42 to c. Set 72

Label 25C – Notes and Columbia in circle at top
Three lines of patents appear under the notes logo.
Top line of rim print ends with a date in May, 1923.
Front cover has embossed gold print.
Columbia Records is at the bottom left corner.



Set 73 to c. Set 76

Label 25D – Notes and Columbia in circle at top with REG US PAT OFF
Two-line rim print mentions a date in 1913;
top line ends with RE 16588.
Front cover has embossed gold print.
Columbia Records is at the bottom left corner.



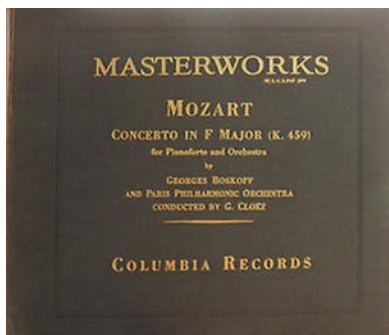
c. Set 104 to Set 125

Label 25D – Notes and Columbia in circle at top with REG US PAT OFF
 Two-line rim print mentions a date in 1913;
 top line ends with RE 16588.
 Front cover has embossed gold print.
 Columbia Records is centered at the bottom.



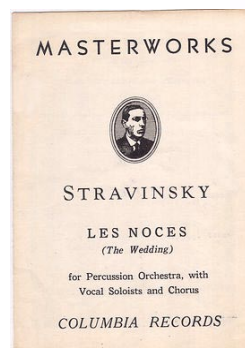
Set 126 to Set 175

Label 25E – Notes and Columbia in circle at top with REG US PAT OFF
 Two-line rim print mentions a date in 1913;
 top line ends with patent number 1702564.
 Front cover has embossed gold print.
 Columbia records is centered at the bottom.



Set 176 to Set 204 and Set 215

Label 32 – At the top of the label are the words NOT LICENSED FOR RADIO BROADCAST. Notes and Columbia in circle at top with REG US PAT OFF
 At the bottom of the label is a simple, short copyright statement.
 Front cover is blue with a sticker shaped like a window pane.
 Print on sticker is blue on a white background.
 Front cover has the notes logo but no set number.
 Libretto shows no Columbia logo on cover.
 Some copies of 177 exist with a cover like the above issue.



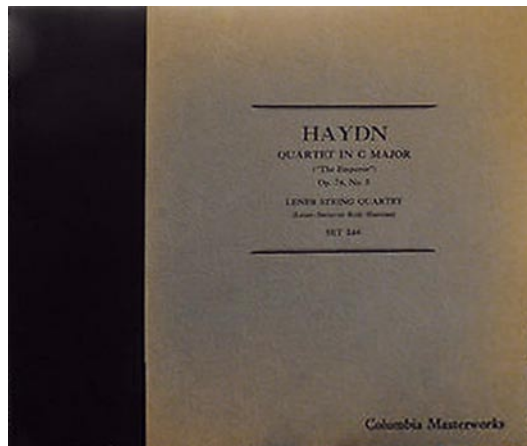
c. Set 205 to 214 and 216 to Set 238

Label 32 – At the top of the label are the words NOT LICENSED FOR RADIO BROADCAST. Notes and Columbia in circle at top with REG US PAT OFF
 At the bottom of the label is a simple, short copyright statement.
 Front cover is black or blue with one of two stickers: white on black Background or blue on white background.
 Front cover has “Set ###” and the notes logo.
 Libretto shows no Columbia logo on cover.



Set 239 to Set 250

Label 32 – At the top of the label are the words NOT LICENSED FOR RADIO BROADCAST. Notes and Columbia in circle at top with REG US PAT OFF
 At the bottom of the label is a simple, short copyright statement.
 Front cover to most issues is mainly green.
 Front cover has “Set ###”.
 Front cover to most issues has Columbia Masterworks in the lower right.
 There is no Columbia logo on the front cover.
 Libretto shows the “notes” logo.



Set c. 251 to c. Set 315

Label 35 – with COLUMBIA in large letters and short copyright
 Front cover to most issues is mainly green.
 Front cover has “Set ###”.
 Front cover to most issues has Columbia Masterworks in the lower right.
 There is no Columbia logo on the front cover.
 Libretto shows the “notes” logo.



Pressings of Columbia Masterworks Albums (Set No 316 on)

Set c. 316 to Set 364

Label 38a – with 1937 copyright

Front cover to most issues is mainly green.

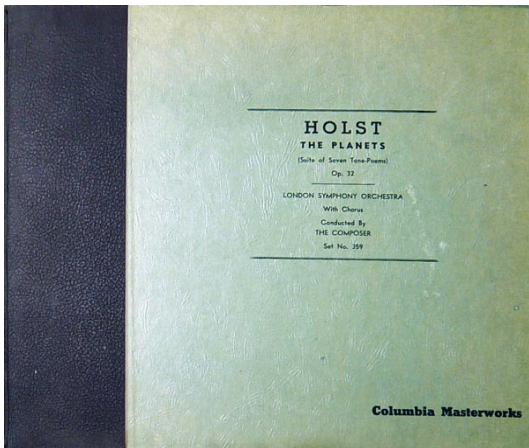
Front cover has “Set No ####” without any prefix.

Front cover to most issues has Columbia Masterworks in the lower right.

There is no Columbia logo on the front cover.

If the records are in the AM- series, this is noted on the label; otherwise there is no prefix.

Libretto (book) shows the “notes” logo only and lists the catalog number with no prefix.



Set M-366 to Set M-372

Label 38a – with 1937 copyright

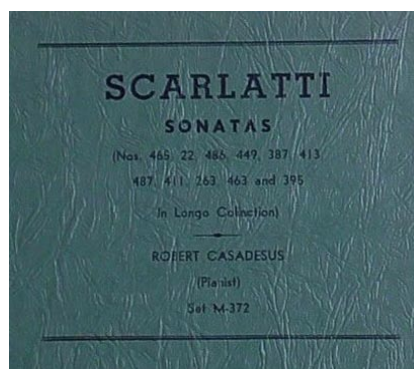
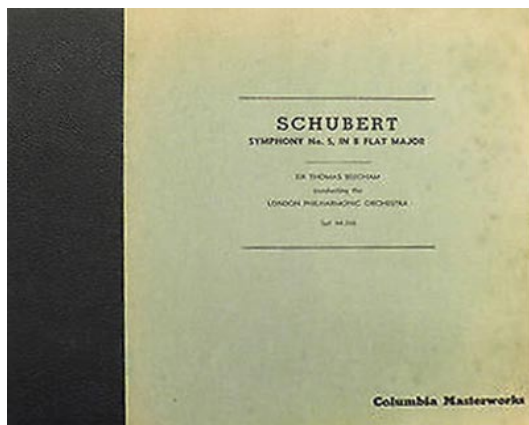
Front cover to most issues is mainly green.

Front cover has “Set M-####”.

Front cover to most issues has Columbia Masterworks in the lower right.

There is no Columbia logo on the front cover.

The prefix (M- or AM-) appears on the label.



Set M-374

Label 39m – Columbia/CBS logo at top. Set number in the middle of the label. There are two lines of print at the lower perimeter of the label. Front cover to M-374 is mainly green; M-373 is part of a series. Front cover has “Set M-###”. Front cover to M-374 has Columbia Masterworks in the lower right. There is no Columbia logo on the front cover. The prefix (M- or AM-) appears on the label. The book may have either old or new logo.



Set M-375 to Set M-377

Label 39 – Columbia/CBS logo at top. Set number in the middle of the label. There are two lines of print at the lower perimeter of the label. Front cover is mainly green. Front cover has “Set M-###”. Front cover has Columbia Masterworks in the lower right. There is no Columbia logo on the front cover. The prefix (M- or AM-) appears on the label from here on. The libretto shows the Columbia/CBS logo from here on.



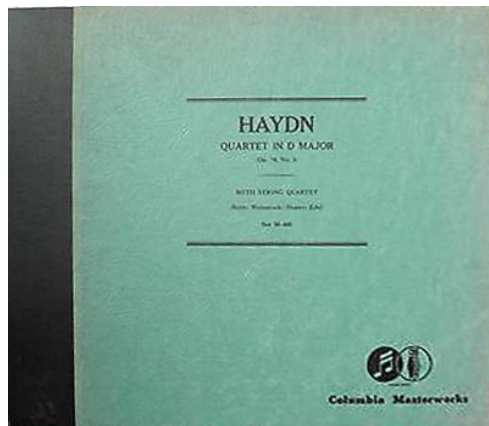
Set M-378 to Set M-391

Label 39A – Columbia/CBS logo at top. Set number at the left side of the label. There are three lines of patent information across the middle of the label, including patent numbers and “other patents pending.” Front cover is mainly green. Front cover has “Set M-###”. Front cover has Columbia Masterworks in the lower right. Except for M-389, there is no Columbia logo on the front cover.



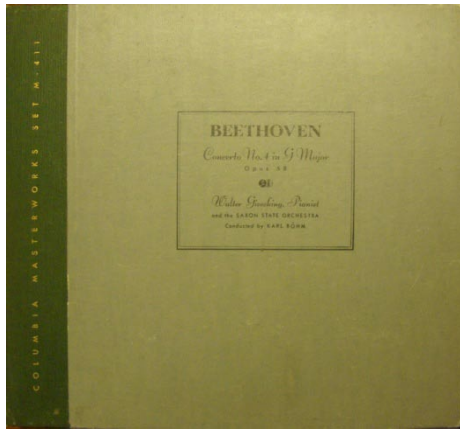
Set M-392 to Set M-402

Label 39A – Columbia/CBS logo at top. Set number at the left side of the label. There are three lines of patent information across the middle of the label, including patent numbers and “other patents pending.” Front cover is mainly green. Front cover has “Set M-###”. The Columbia/CBS logo appears in the lower right corner of the front cover above “Columbia Masterworks.”



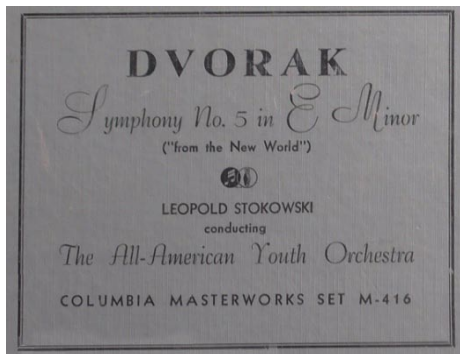
Set M-403 to Set M-413

Label 39A – Columbia/CBS logo at top. Set number at the left side of the label. There are three lines of patent information across the middle of the label, including patent numbers and “other patents pending.” Front cover is mainly green. Front cover has “Set M-###” running vertically in the strip at the left. The Columbia/CBS logo appears the middle of a box containing the release information.



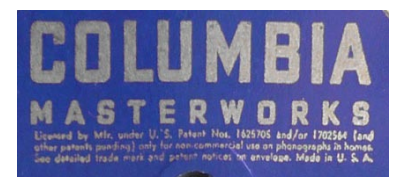
Set M-414 to Set M-416

Label 39A – Columbia/CBS logo at top. Set number at the left side of the label. There are three lines of patent information across the middle of the label, including patent numbers and “other patents pending.” Front cover either is a single color (often gray) or is a custom artistic cover. Front cover has “Set M-###” in the box of information. The Columbia/CBS logo appears the middle of a box containing the release information.



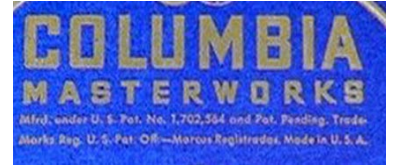
Set M-417 to Set M-575

Label 39B – Columbia/CBS logo at top. Set number at the left side of the label. There are three lines of patent information across the middle of the label, including patent numbers and “and/or 1702564.” Front cover either is a single color (often gray) or is a custom artistic cover. Front cover has “Set M-###” in the box of information. The Columbia/CBS logo appears the middle of a box containing the release information.



Set M-576 to approximately Set M-702

Label 39C – Columbia/CBS logo at top. Set number at the left side of the label.
There are two lines of patent information across the middle of the label;
the only number given is 1,702,564.



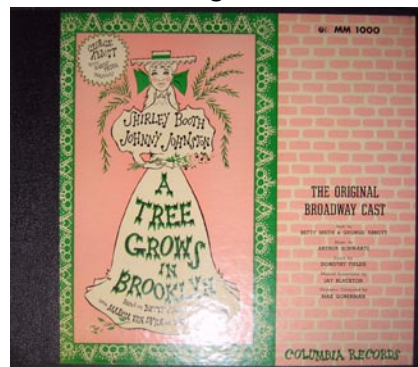
approximately Set M-703 to Set M-720

Label 39D – Blue label.
Columbia/CBS logo at top. Set number at the left side of the label.
There are two lines of patent information across the middle of the label;
no numbers are given.



Set M-721 to Set MM-1000

Label 39D – Green label.
Columbia/CBS logo at top. Set number at the left side of the label.
There are two lines of patent information across the middle of the label;
no numbers are given.



Sets Numbered Higher than 1000

Label 50 – Blue label.
Columbia/CBS logo at top. Set number at the left side of the label.
There is a single line of information across the middle of the label;
The Columbia/CBS logo appears in that line.



