

Rolling Stones Singles Discography

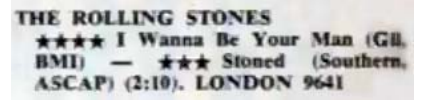
1964-1970

Regular-Issue Singles

“I Wanna Be Your Man”/ “Stoned”

London 45-LON-9641

February 22, 1964.



Label 61wdj

White label with script London. Pressed by Monarch, job number Δ 51259.

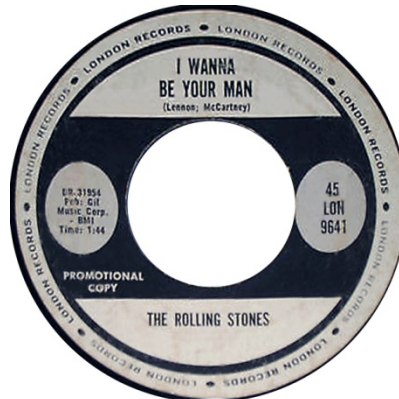


Label 61dj

White label with deep purple bar across label and gray ovals.

Columbia Bridgeport (V suffix)

Columbia Terre Haute



Label 61

White label with purple bar across label and gray ovals. Pressed by Columbia Bridgeport.



Aside from the promotional copy having a stamping of February 17, 1964, there are other factors pointing to a date in mid-to-late February for the release of this single. Singles having Monarch numbers around this one were released at about the same time. "The Shoop Shoop Song" by Betty Everett, Δ 51253, was released the week of February 22nd and debuted on the 29th. Ray Charles' "Baby Don't You Cry" was previewed on February 15th, released near the end of the month, and debuted on the *Billboard* chart on March 14th; its Monarch number was Δ 51264. That information coincides with the fact that the Rolling Stones single was reviewed on February 22nd, 1964 (on page 22).

THE ROLLING STONES—NOT FADE AWAY (Nor Va Jak, BMI)
 (1:50)—Another hot GB group that proves how deep the r.&b. roots have gone over there. Flip: "I Wanna Be Your Man" (Gil, BMI) (1:44). **London 9657**

"Not Fade Away"/ "I Wanna Be Your Man"

London 45-LON-9657

March 28, 1964.

Label 61wdj

White label with script London. Pressed by Monarch, A-side job number Δ 51659.



Label61dj

White label with deep purple bar across label and gray ovals.

Columbia Terre Haute



Label61

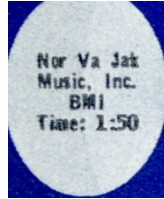
White label with purple bar across label and gray ovals.

March 28, 1964, to March, 1965.

Monarch (i)



Monarch (ii)



Made in U.S.A.
DR 32719

Columbia Terre Haute



RCA Rockaway



Columbia Pitman?



Picture Sleeve



Jan Davis' "The Fugitive," Δ 51671, was first mentioned in BB on March 28th. The full-page ad for the Stones single appeared on April 4th.

Label65

Pinwheel label with shades of blue. Copies pressed by Monarch have "Distributed By London Records Inc." on the label.

March, 1965 to June, 1974.



Label65N

Pinwheel label with shades of blue. Singles have a "5N" prefix
July, 1974, to December, 1976.

Label77

Sunrise label.

January, 1977, to 1979.

Label77a

Sunrise label with matrix number suffix indicating pressing plant.
1979 to 1984.

Label84

White label with triangular logo and Polydor rim text.
1984 to 1995.



**“Tell Me (You’re Coming Back)”/ “I Just Wanna Make Love to You”
London 45-LON-9682**

Label61

White label with purple bar across label and gray ovals.

There is no production credit on the label.

June 27, 1964, to July, 1964.

Monarch

Columbia Terre Haute

Columbia Pitman



RCA Rockaway



Label61(2)

White label with purple bar across label and gray ovals.

A production credit for Andrew Loog Oldham appears on the label.

July, 1964, to March, 1965

Monarch

Columbia Terre Haute

Columbia Pitman



Picture Sleeve



Most copies of the picture sleeve have the open side as the side with the fan club box; some copies have the open side as the side without the fan club box.

Label65

Pinwheel label with shades of blue. Copies pressed by Monarch have "Distributed By London Records Inc." on the label.

March, 1965 to June, 1974.



Label65dj

Pinwheel label with shades of orange.

June, 1964, to June, 1974.

Monarch

Columbia Terre Haute

RCA Rockaway



Label65N

Pinwheel label with shades of blue. Singles have a "5N" prefix
July, 1974, to December, 1976.

Label77

Sunrise label.
January, 1977, to 1979.

Label77a

Sunrise label with matrix number suffix indicating pressing plant.
1979 to 1984.

Label84

White label with triangular logo and Polydor rim text.
1984 to 1995.

Monarch

Columbia Terre Haute



"It's All Over Now" / "Good Times Bad Times"
London 45-LON-9687

Label61

White label with purple bar across label and gray ovals.

July 18, 1964, to March, 1965.

Monarch

Columbia Pitman

Columbia Terre Haute (i)

CTH (ii)



RCA Rockaway



Picture Sleeve



Label65

Pinwheel label with shades of blue. Copies pressed by Monarch have "Distributed By London Records Inc." on the label.

March, 1965 to June, 1974.

Monarch copies list the wrong A-side time of 2:28.



Label65dj

Pinwheel label with shades of orange. Copies pressed by Monarch have the wrong A-side time of 2:28. July, 1964, to June, 1974.

Monarch

Columbia Terre Haute

RCA Rockaway



Label65N

Pinwheel label with shades of blue. Singles have a "5N" prefix July, 1974, to December, 1976.

Label77

Sunrise label.

January, 1977, to 1979.

Label77a

Sunrise label with matrix number suffix indicating pressing plant. 1979 to 1984.

Label84

White label with triangular logo and Polydor rim text. 1984 to 1995.



"Time is on My Side" / "Congratulations"
London 45-LON-9708

Label61

White label with purple bar across label and gray ovals.
October 10, 1964, to March, 1965.

Monarch



Columbia Pitman



Columbia Pitman (no "V")



Columbia Terre Haute?



RCA Rockaway



Picture Sleeve



Label65

Pinwheel label with shades of blue.
March, 1965 to June, 1974.



Label65dj

Pinwheel label with shades of orange. Copies pressed by Monarch have the wrong A-side time of 2:28. October, 1964, to June, 1974.

Monarch

Columbia Pitman



Label65N

Pinwheel label with shades of blue. Singles have a "5N" prefix July, 1974, to December, 1976.

Label77

Sunrise label.

January, 1977, to 1979.

Label77a

Sunrise label with matrix number suffix indicating pressing plant. 1979 to 1984.

Label84

White label with triangular logo and Polydor rim text. 1984 to 1995.



"Heart of Stone" / "What a Shame"

London 45-LON-9725

Label61

White label with purple bar across label and gray ovals.

January 2, 1965, to March, 1965.

Monarch

Columbia Pitman



Picture Sleeve



Label65

Pinwheel label with shades of blue.

March, 1965 to June, 1974.



Label65dj

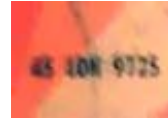
Pinwheel label with shades of orange.

January, 1965 to June, 1974.

Monarch

Columbia Pitman

Pitman (without V)



Label65N

Pinwheel label with shades of blue. Singles have a "5N" prefix

July, 1974, to December, 1976.

Label77

Sunrise label.

January, 1977, to 1979.

Label77a

Sunrise label with matrix number suffix indicating pressing plant.

1979 to 1984.

Label84

White label with triangular logo and Polydor rim text.

1984 to 1995.

Monarch

Columbia Terre Haute



"The Last Time"/ "Play With Fire"
London 45-LON-9741 or LON-9741

Label61

White label with purple bar across label and gray ovals.

March 20, 1965, until the stock ran out.

Columbia Pitman



Picture Sleeve



Label65

Pinwheel label with shades of blue.

March 20, 1965, to June, 1974.

Monarch (no distributed)

Monarch (distributed)

Pitman (white logo, no V)



Columbia Pitman (white logo, V)



Pitman (black logo)



Columbia Terre Haute



Label65dj

Pinwheel label with shades of orange.

March, 1965, to June, 1974.

Monarch

Columbia Pitman



Label65N

Pinwheel label with shades of blue. Singles have a "5N" prefix

July, 1974, to December, 1976.

Label77

Sunrise label.

January, 1977, to 1979.

Label77a

Sunrise label with matrix number suffix indicating pressing plant.

1979 to 1984.

Label84

White label with triangular logo and Polydor rim text.

1984 to 1995.

Monarch

Columbia Terre Haute





**“(I Can’t Get No) Satisfaction” / “The Under-Assistant West Coast Promotion Man”
London 45-LON-9766**

Label65

Pinwheel label with shades of blue.

June 5, 1965, to June, 1974.

Monarch (distributed, single-line engineer credit)

Monarch (distributed, two-line engineer credit)

Monarch (no distributed)



Pitman (white logo, V)

Columbia Pitman (black logo, V)

Pitman (black logo)



Columbia Terre Haute (?)



Label65dj

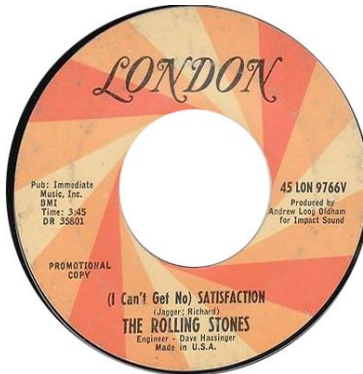
Pinwheel label with shades of orange.

June, 1965, to June, 1974.

Monarch



Columbia Pitman



Picture sleeve



Label65N

Pinwheel label with shades of blue. Singles have a "5N" prefix
July, 1974, to December, 1976.

Monarch



Columbia Terre Haute



Columbia Pitman



Label65Ndj

Pinwheel label with shades of orange. Singles have a "5N" prefix
July, 1974, to December, 1976.

Monarch



Columbia Terre Haute



Columbia Pitman



Label77

Sunrise label.

January, 1977, to 1979.



LabelGH

Gold label with "London Great Hits." Probably pressed in error.
c. 1979.



Label77a

Sunrise label with matrix number suffix indicating pressing plant.
1979 to 1984.



Label84

White label with triangular logo and Polydor rim text.
1984 to 1995.

Bestway

Specialty



“Get Off of My Cloud”/ “I’m Free”
London 45-LON-9792

Label65

Pinwheel label with shades of blue.

October 2, 1965, to June, 1974.

Monarch (distributed)



Monarch (no distributed)



Columbia Pitman



Bestway



Later Monarch



Label65dj

Pinwheel label with shades of orange.

October, 1965, to June, 1974.

Monarch

Columbia Pitman



Picture sleeve



The picture sleeve exists in three varieties: straight cut (the most common); curved ends on the open side, but straight across the top; curved ends on the open sides and tab cut. The latter two are most frequently associated with Monarch pressings.

Label65N

Pinwheel label with shades of blue. Singles have a "5N" prefix July, 1974, to December, 1976.

Label77

Sunrise label. January, 1977, to 1979.

Label77a

Sunrise label with matrix number suffix indicating pressing plant. 1979 to 1984.

Label84

White label with triangular logo and Polydor rim text. 1984 to 1995.



Bestway



Specialty



**“As Tears Go By”/ “Gotta Get Away”
London 45-LON-9808**

Label65

Pinwheel label with shades of blue.
December 18, 1965, to June, 1974.
Monarch (distributed)



Monarch (no distributed)



Columbia Pitman



Columbia Terre Haute?



Later Monarch



Bestway



Label65dj

Pinwheel label with shades of orange.
December, 1965, to June, 1974.
Monarch



Columbia Pitman



Picture sleeve



Label65N

Pinwheel label with shades of blue. Singles have a "5N" prefix
July, 1974, to December, 1976.

Label77

Sunrise label.

January, 1977, to 1979.

Label77a

Sunrise label with matrix number suffix indicating pressing plant.
1979 to 1984.

Label84

White label with triangular logo and Polydor rim text.
1984 to 1995.



**“19th Nervous Breakdown”/ “Sad Day”
London 45-LON-9823**

Label65

Pinwheel label with shades of blue.

February 12, 1966, to June, 1974.

Monarch (distributed)



Monarch (no distributed)



Columbia Pitman



Bestway



Label65dj

Pinwheel label with shades of orange.

February, 1966, to June, 1974.

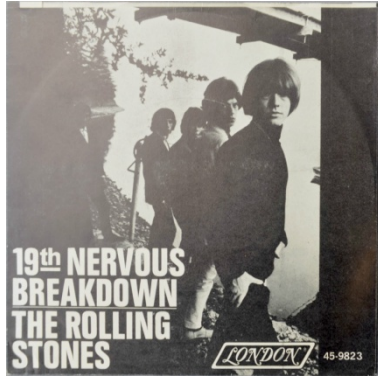
Monarch



Columbia Pitman



Picture sleeve



Label65N

Pinwheel label with shades of blue. Singles have a "5N" prefix
July, 1974, to December, 1976.

Label77

Sunrise label.

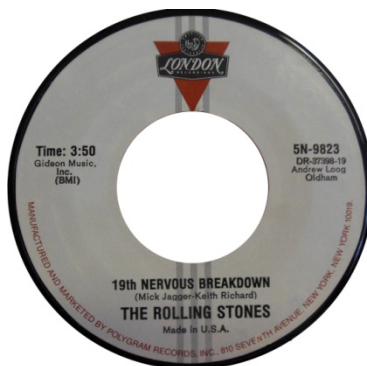
January, 1977, to 1979.

Label77a

Sunrise label with matrix number suffix indicating pressing plant.
1979 to 1984.

Label84

White label with triangular logo and Polydor rim text.
1984 to 1995.



**“Paint it Black”/ “Stupid Girl”
London 45-LON-901 or 45-901**

Label65

Pinwheel label with shades of blue.

May 7, 1966, to June, 1974.

Monarch (thin font)

Monarch (wide font, distrib)

Monarch (wide, no distrib.)



Columbia Pitman

Bestway

RCA Rockaway



Label65dj

Pinwheel label with shades of orange.

April, 1966, to June, 1974.

Monarch

Columbia Pitman



Picture sleeve

East coast copies of the sleeve are cut straight across the top of the open side. Sleeves released with some Monarch copies have thumb tabs.



Label65N

Pinwheel label with shades of blue. Singles have a "5N" prefix
July, 1974, to December, 1976.

Label77

Sunrise label.

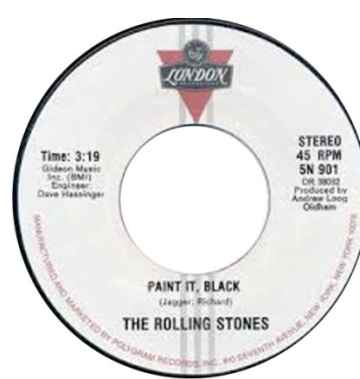
January, 1977, to 1979.

Label77a

Sunrise label with matrix number suffix indicating pressing plant.
1979 to 1984.

Label84

White label with triangular logo and Polydor rim text.
1984 to 1995.



“Mother’s Little Helper”/ “Lady Jane”
London 45-LON-902 or 45-902

Label65

Pinwheel label with shades of blue.

July 2, 1966, to June, 1974.

Monarch (distrib)

Columbia Pitman



Bestway

RCA Rockaway



Label65dj

Pinwheel label with shades of orange.

June, 1966, to June, 1974.

Monarch

Columbia Pitman



Picture sleeve



Label65N

Pinwheel label with shades of blue. Singles have a "5N" prefix
July, 1974, to December, 1976.

Label77

Sunrise label.
January, 1977, to 1979.

Label77a

Sunrise label with matrix number suffix indicating pressing plant.
1979 to 1984.

Label84

White label with triangular logo and Polydor rim text.
1984 to 1995.



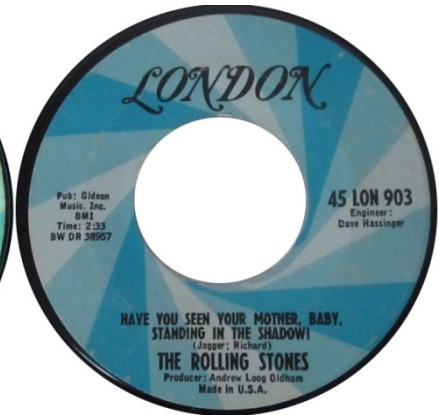
**“Have You Seen Your Mother, Baby, Standing in the Shadow?”/ “Who’s Driving My Plane”
London 45-LON-903 or 45-903**

Label65

Pinwheel label with shades of blue.
September 23, 1966, to June, 1974.
Monarch (distrib)

Columbia Pitman

Bestway (1st)



Bestway (2nd)

Monarch (2nd)

Shelley Products



Terre Haute?



Label65dj

Pinwheel label with shades of orange.

September, 1966, to June, 1974.

Monarch

Columbia Pitman

Bestway



Picture sleeve



Label65N

Pinwheel label with shades of blue. Singles have a "5N" prefix

July, 1974, to December, 1976.

Label77

Sunrise label.

January, 1977, to 1979.

Label77a

Sunrise label with matrix number suffix indicating pressing plant.

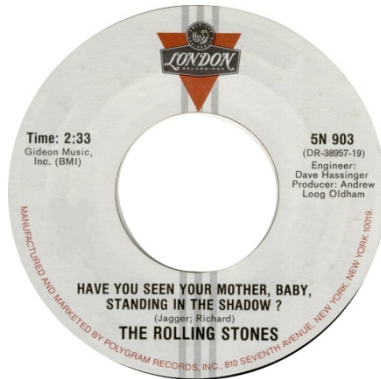
1979 to 1984.

Label84

White label with triangular logo and Polydor rim text.

1984 to 1995.





**“Let’s Spend the Night Together”/ “Ruby Tuesday”
London 45-LON-904 or 45-904 or 904**

Label65

Pinwheel label with shades of blue.

January 13, 1967, to June, 1974.

Monarch (distrib)

Columbia Pitman

Bestway



Monarch (no distrib)

Columbia Santa Maria

Shelley Products



Label65dj

Pinwheel label with shades of orange.

January, 1967, to June, 1974.

Monarch

Columbia Pitman



Picture sleeve



Label65N

Pinwheel label with shades of blue. Singles have a "5N" prefix

July, 1974, to December, 1976.

Label77

Sunrise label.

January, 1977, to 1979.

Label77a

Sunrise label with matrix number suffix indicating pressing plant.

1979 to 1984.

Label84

White label with triangular logo and Polydor rim text.

1984 to 1995.





**“Dandelion”/ “We Love You”
London 45-LON-905 or 45-905**

Label65

Pinwheel label with shades of blue.
September 2, 1967, to June, 1974.
Monarch

Columbia Pitman

Bestway



Shelley Products



Label65dj

Pinwheel label with shades of orange.

August, 1967, to June, 1974.

Monarch

Columbia Pitman (i)

Columbia Pitman (ii)



Columbia Pitman (iii)



Picture sleeve



Label65N

Pinwheel label with shades of blue. Singles have a "5N" prefix

July, 1974, to December, 1976.

Label77

Sunrise label.

January, 1977, to 1979.

Label77a

Sunrise label with matrix number suffix indicating pressing plant.
1979 to 1984.

Label84

White label with triangular logo and Polydor rim text.
1984 to 1995.



"She's a Rainbow" / "2000 Light Years From Home"
London 45-LON-906 or 45-906

Label65

Pinwheel label with shades of blue.
December 23, 1967, to June, 1974.
Monarch

Columbia Pitman

Bestway



Shelley Products

Columbia Terre Haute



Label65dj

Pinwheel label with shades of orange.

December, 1967, to June, 1974.

Monarch

Columbia Pitman

Columbia Terre Haute



Pub: Gideon
Music Inc.
(BMI)
Time: 2:52
AP-2-41715

Picture sleeve



Label65N

Pinwheel label with shades of blue. Singles have a "5N" prefix

July, 1974, to December, 1976.

Label77

Sunrise label.

January, 1977, to 1979.

Label77a

Sunrise label with matrix number suffix indicating pressing plant.

1979 to 1984.



“In Another Land” (Bill Wyman)/ “The Lantern”
London 45-LON-907 or 45-907

Label65

Pinwheel label with shades of blue.
 December 2, 1967, to June, 1974.
 Monarch

Columbia Pitman



Shelley Products

Columbia Terre Haute



Label65dj

Pinwheel label with shades of orange.
 November, 1967, to June, 1974.
 Monarch

Columbia Pitman

Columbia Terre Haute



Picture sleeve



Label65N

Pinwheel label with shades of blue. Singles have a "5N" prefix
July, 1974, to December, 1976.

Label77

Sunrise label.
January, 1977, to 1979.



"Jumpin' Jack Flash" / "Child of the Moon"

London 45-LON-908 or 45-908

Label65

Pinwheel label with shades of blue.
June 8, 1968, to June, 1974.

Monarch

Columbia Pitman

Shelley Products



Label65dj

Pinwheel label with shades of orange.

June, 1968, to June, 1974.

Monarch

Columbia Pitman

Stereo promo, Pitman



Picture sleeve



Label65N

Pinwheel label with shades of blue. Singles have a "5N" prefix

July, 1974, to December, 1976.

Label77

Sunrise label.

January, 1977, to 1979.

Label77a

Sunrise label with matrix number suffix indicating pressing plant.

1979 to 1984.

Label84

White label with triangular logo and Polydor rim text.

1984 to 1995.





“Street Fighting Man” / “No Expectations”
London 45-LON-909 or 45-909

Label65

Pinwheel label with shades of blue.
 September 7, 1968, to June, 1974.
 Monarch

Columbia Pitman

Shelley Products



Label65dj

Pinwheel label with shades of orange.
 September, 1968, to June, 1974.
 Monarch

Columbia Pitman

Shelley



Stereo promo, Monarch



Stereo promo, Pitman



Picture sleeve



Label65N

Pinwheel label with shades of blue. Singles have a "5N" prefix July, 1974, to December, 1976.

Label77

Sunrise label.

January, 1977, to 1979.

Label77a

Sunrise label with matrix number suffix indicating pressing plant. 1979 to 1984.

Label84

White label with triangular logo and Polydor rim text.

1984 to 1995.



**“Honky Tonk Women”/ “You Can’t Always Get What You Want”
London 45-LON-910 or 45-910**

Label65

Pinwheel label with shades of blue.

July, 1969, to June, 1974.

Monarch



Columbia Pitman



Shelley Products



Columbia Terre Haute



Bestway (i)



Bestway (ii)



PRC Indianapolis



Label65dj

Pinwheel label with shades of orange.

July, 1969, to June, 1974.

Monarch



Columbia Pitman



Columbia Terre Haute



Stereo promo, Monarch



Stereo promo, Terre Haute



Picture sleeve



Label65N

Pinwheel label with shades of blue. Singles have a "5N" prefix July, 1974, to December, 1976.

Label77

Sunrise label.

January, 1977, to 1979.

Label77a

Sunrise label with matrix number suffix indicating pressing plant. 1979 to 1984.

Label84

White label with triangular logo and Polydor rim text.
1984 to 1995.

