

“Surfer Girl”/“Little Deuce Coupe”

Label 62-01

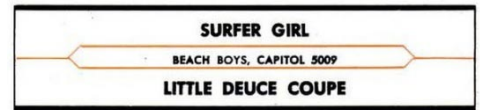
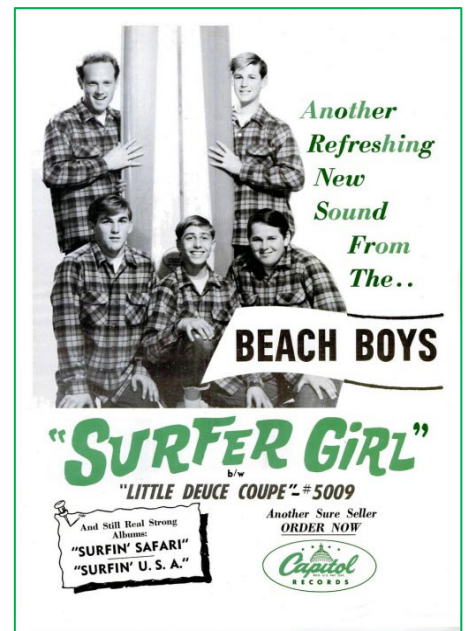
Capitol

5009

Orange/yellow swirl label without subsidiary print.

A-side publishing credit mentions “Sea of Tunes” and “Guild Music.”

B-side title is on one line.



01S (Keystone print)

Factories: Scranton



01L (Bert-Co print)

Factories: Los Angeles

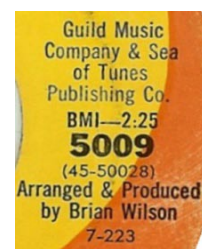
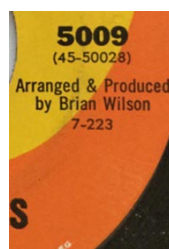
All copies of 01L have “Arranged & Produced” on one line on both sides.

Label 01L(i) has a blank line above and below the catalog number. 5009 is **shifted to the right**, extending past the line below it on both sides.

Label 01L(ii) has a blank line above and below the catalog number. 5009 is centered above the matrix number. On side A, the block of text at the right side of the label is about as far from the song title as it is from The Beach Boys; on side B, the block of text is closer to the song title.

Label 01L(iii) is similar to 01B(ii), but the block of text at the right side of the label has been moved downward on both sides.

Label 01L(iv) has no blank line above or below the catalog number.



Cash Box again predicted the record's success in the July 27, 1963, issue – this time marking “Little Deuce Coupe” as the A-side in their review. Capitol advertised and promoted the record, and both sides being popular immediately garnered airplay. *Cash Box* charted “Surfer Girl” at #5 and “Little Deuce Coupe” at #19, while *Billboard* had the A-side peak at #7.

“LITTLE DEUCE COUPE” (1:49) [Sea Of Tunes BMI — Wilson, Christain]	“SURFER GIRL” (2:25) [Guild, Sea Of Tunes BMI— Wilson]
THE BEACH BOYS (Capitol 5009)	
Chances are the Beach Boys'll have another big Capitol double-header that'll repeat the huge success of their current stand, “Surfin', U.S.A.” and “Shut Down.” One half's a delightful shuffle rhythm rocker tabbed “Little Deuce Coupe” while the other's a lilting soft beat-ballad charmer labeled “Surfer Girl.”	

Label 62-02

Capitol

5009

Orange/yellow swirl label without subsidiary print.

A-side publishing credit mentions “Guild Music” only.

B-side title is on two lines.



02S (Keystone print)

Factories: Scranton

Copies released in summer, 1966, have yellow rim print (02Sy).



02L (Bert-Co print)

Factories: Los Angeles

Both sides have “Arranged & Produced” on one line, as in 01B.

On Label 02L(i), neither side has blank space above or below the catalog number.

On Label 02L(ii), there are blank lines above and below the catalog number.

Label 62-03

Capitol

5009

Orange/yellow swirl label without subsidiary print.

A-side publishing credit mentions "Guild Music" only.

B-side title is on two lines.

Production credits (Los Angeles) on both sides have "Arranged &" on one line, with "Produced by" on the next line.



03L (Bert-Co print)

Factories: Los Angeles

Label 03L(i) is an error pressing having the top two lines of the Brian Wilson credit reversed on side B. Instead of

**Arranged &
Produced by**

it reads

**Produced by
Arranged &.**

For Label 03L(ii), the error on side B was corrected. There is a blank line on side B above BMI-1:40; this is a mistake.

Label 03L(iii) is like 03L(ii), but there is no blank line above BMI-1:40.

Label SL67dj

Capitol Star Line

P-6107

Yellow promotional label.

Released 1967.

Factory: Los Angeles

There is no production credit, but the arrangement credit is present.



Label SL67

Capitol Star Line

6107

Red/white target label without subsidiary rim print

Spring, 1967, to Spring, 1968

Factory: Scranton

The catalog number is in a narrow typeface; rim print is white.

Factory: Los Angeles

The catalog number is at the bottom; rim print is black.



Label SL67x

Capitol Star Line 6107
Red/white target label with subsidiary rim print
Spring, 1968, to November, 1972
Factory: Scranton
The catalog number is in a narrow typeface, as Label SL67.
Factory: Los Angeles
The catalog number is at the bottom, as Label SL67.
Factory: Scranton
The catalog number is in round, small print.
Factory: Los Angeles
The catalog number is in round, wide print.

Label SL72

Capitol Star Line 6107
Dull gold label with "C" logo.
November, 1972, to September, 1975
Factories: Los Angeles; Jacksonville; Winchester
Label SL72(i) lists Sea of Tunes as the publisher for Side B.
Label SL72(ii) lists Irving Music as the publisher for Side B.



Sea
of Tunes
Publishing
Co.
BMI 1:40
6107
(45-50027)
Originally
released:
July 1963

Irving
Music, Inc.
BMI 1:40
6107
(45-50027)
Originally
released:
July 1963

Label SL72r

Capitol Star Line 6107
Dull gold label with "C" logo and rights disclaimer.
September, 1975, to March, 1978
Factories: Los Angeles; Winchester



Label SL78

Capitol Star Line 6107
Dull gold label with dome logo
March, 1978, to November, 1981
Factory: Los Angeles
"MONO" on label
Factory: Winchester
Without "MONO" on label



Label SL81A

Capitol Star Line A-6107
Blue Star Line label with A- prefix.
Factories: Los Angeles; Winchester



Label SL81X

Capitol Star Line X-6107
Blue Star Line label with X- prefix.
Factories: Los Angeles?; Jacksonville; Winchester



Label 83

Capitol X-6107
Rainbow label with rim print in color band.
Factories: Specialty



Label 88

Capitol X-6107
Purple label with small logo; rim text starts with "MANUFACTURED."
Factory: Specialty; Winchester

