

"California Girls"/"Let Him Run Wild"

Label 62

Capitol

5464

Orange/yellow swirl label without subsidiary print.



01S (Keystone print)

Factories: Scranton



01L (Bert-Co print)

Factories: Los Angeles

Label 01L(i) has no blank line above BMI. On both sides, the catalog number is not properly centered over the matrix number.

Label 01L(ii) has no blank line above BMI, and the centering of the catalog number has been corrected.

Label 01L(iii) has a blank line above BMI.



Cash Box and *Billboard* reviewed the new single in their July 17, 1965, issues. An ad in *Cash Box* the following week shows the graphics from the picture sleeve; however, the photograph of the group from the “B” side of the sleeve has been used with the titles from the “A” side that list “California Girls” first. With stations playing the song repeatedly at first, it had no trouble jumping to the #3 position. There it remained, behind (on alternate weeks) two folk-rock songs and the theme from the Beatles’ latest movie.

TOP 20 Spotlights—Predicted to reach

BEACH BOYS—CALIFORNIA GIRLS (Sea of Tunes, BMI)—Hot follow-up to their “Help Me Rhonda” is this Brian Wilson rhythm number from the new “Summer Days (Summer Nights)” LP. Flip: “Let Him Run Wild” (Sea of Tunes, BMI). **Capitol 5464**

Beach Boys on Chart

The Beach Boys are the only group represented on the charts with a summertime, teen-outdoorsy song, “California Girls.” All the Beach Boys-type groups have been washed out to sea by the Dylan-influenced groups who have also begun imitating Dylan’s droning, monotonous vocal style.

From their album, “Summer Days,” a new hit single—

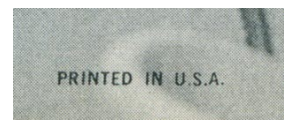


5464

Picture Sleeve

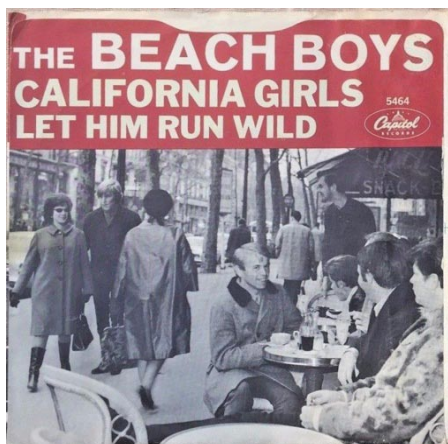
PS1A(east coast):

The sleeve has a straight-cut top. The open side of the sleeve is the side with “California Girls” at the top. This side also features the “Printed in USA” indicator.



PS1B (west coast):

The sleeve is tab cut. The tab side of the sleeve is the side with “California Girls” at the top.



NOTE: The original photograph for the “A-side” photo was taken in late fall, 1964, during the band’s visit to Paris. In the original picture, three people who were not Beach Boys are clearly identifiable. By law, no one’s likeness may be used for promotion without their consent. Since finding the three people was basically impossible, Capitol’s art department altered the photograph. The man in the black shirt had his hairstyle altered slightly, and Capitol gave him a beard. The woman in the knee-length coat who was facing the camera had her hair lengthened and received a pair of sunglasses – obscuring her face. The woman in the original photograph who was walking behind that woman was completely removed from the picture.



Label 62xb

Capitol 5464
Orange/yellow swirl with black subsidiary print.
August, 1968, to October, 1968
Factories: Scranton



Label 62xw

Capitol 5464
Orange/yellow swirl with white subsidiary print.
October, 1968, to April, 1969
Factories: Scranton; Los Angeles (small print)



Label 69

Capitol 5464
Red/orange target label with dome logo
April, 1969, to June, 1969
Factories: Scranton



Label 69a

Capitol 5464
Red/orange target label with "C" logo
June, 1969, to October, 1970
Factories: Scranton; Los Angeles (wide print)
Some copies have "TM" to the right of "Capitol"; others have ® below the L of Capitol.



Label 69d

Capitol

5464

Red/orange target label with "C" logo

There is a white dot behind the Capitol logo.

October, 1970, to November, 1972

Factories: Scranton; Los Angeles (wide print); Jacksonville (matte label)

Copies have ® to the right of the L of Capitol.



Label 72

Capitol

5464

Orange label with patent number for T-Rim in rim print; no rights disclaimer

Released November, 1972, through October, 1973

Factories: Los Angeles



Label 72a

Capitol

5464

Orange label without patent number for T-Rim in rim print; no rights disclaimer

Released October, 1973, through September, 1975

Factories: Los Angeles, Jacksonville, Winchester



Label 72r

Capitol

5464

Orange label. "All rights reserved" rim print.

Released September, 1975, through March, 1978

Factories: Los Angeles, Jacksonville, Winchester



Label 78

Capitol Star Line

5464

Purple label with "MFD" rim print.

Released March, 1978, to November, 1981

Factories: Jacksonville, Winchester



Label SL81S

Capitol Star Line

A-6289

Blue Star Line label with A- prefix and "STEREO" indicator

Factories: Winchester



Label SL81M

Capitol Star Line

A-6289

Blue Star Line label with A- prefix and "MONO" indicator

Factories: Winchester



Label SL81X

Capitol Star Line X-6289
Blue Star Line label with X- prefix.
Factories: Winchester



Label SL83

Capitol Star Line X-6289
Rainbow label with rim print in color band.
Factories: Specialty



Label SL88

Capitol Star Line X-6289
Purple label with small logo; rim text starts with "MANUFACTURED."
Factory: Specialty

