

Imagine

Label 71

Apple

SW-3379

Custom label.

"Mfd. by Apple Records, Inc." appears on both sides.

Factories: Scranton, Los Angeles, Jacksonville, Winchester

First appearance in trade magazines: September 11, 1971.



Possible covers:

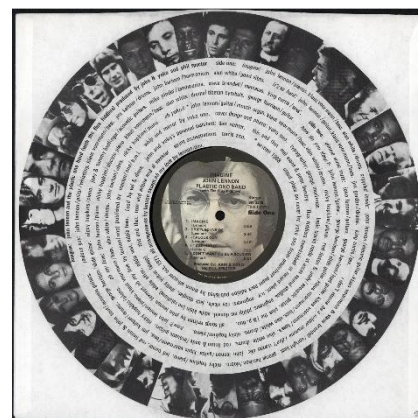
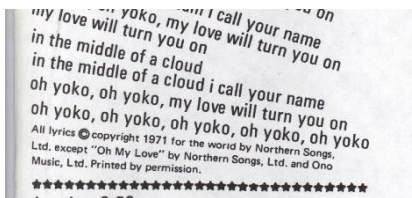
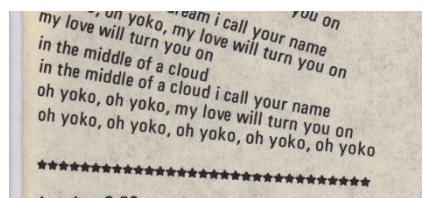
Cover is folded and has additional lamination.

Cover is folded but has no additional lamination.

Inserts:

Die-cut inner sleeve with photos, credits, and lyrics.

The first inner sleeve (is1) is missing the publishing copyrights on the lyric side; the corrected sleeve (is2) has the copyright statement.



Poster of John Lennon at the Piano.

"Photo by Peter Fordham" and "Printed in USA" at the lower right.



POP
JOHN LENNON—
Imagine.
Apple 3379

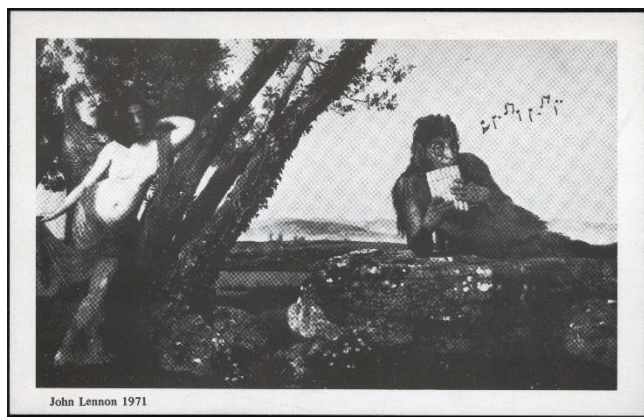
Lennon has emerged as the real British Dylan, chronicling his own personal search for self-expression with that of the times which threaten to divide the self into oblivion. Down-to-earth honest introspection is steeped in insight, while magnificent string arrangements complement Lennon's latest concept of rock on "Imagine," "Give Me Some Truth," "How?," "Oh Yoko" and "Crippled Inside." Move over Sgt. Pepper.



Postcard.

The first postcard, pc1, has a photograph of John in a yard with a pig. This photo was a playful parody of the front cover to Paul McCartney's *Ram* album.

The second postcard, pc2, is a collage comprised of an image of Yoko's face, and a drawing of (Lennon's) glasses on top of a painting. Lennon also drew musical notes on the image. That painting is the 1879 masterpiece, "Spring Evening," by Arnold Böcklin. Hailing from Switzerland, the artist often painted images from mythology, and several of his works featured Pan playing his pipes. Böcklin was living in Italy when he created Spring Evening.



Label 71r

Apple

SW-3379

Custom label with "all rights reserved" disclaimer.

Labels have a greenish tint

Factories: Los Angeles; Winchester

Possible covers:

Cover is made from paper slicks, folded and glued to cardboard.

Inserts as above.

This pressing dates to 1975-76.



Label 78

Capitol

SW-3379

Purple label with "MFD. BY CAPITOL" rim print

Released 1978-1983

Factories: Los Angeles; Jacksonville; Winchester

Possible covers:

Cover is made from posterboard.



Label 83

Capitol

SW-3379

Black rainbow label with manufacturing information in the color band
Text on label is in the same print as on the 1978 issue, with no publishing credits.

Released 1983-1987

Factories: Los Angeles; Jacksonville; Winchester

Possible covers:

Cover is made from posterboard.



Label 83a

Capitol

SW-3379

Black rainbow label with manufacturing information in the color band
Title and catalog number are in larger print than on Label 83. The label and cover mention a digital remaster, and the song titles are different than on earlier pressings. The publishing credits appear on the label. Some songs are credited to "Lenono Music."

Released 1987

Factories: Winchester (?); Specialty



Label 83b

Capitol

SW-3379

Black rainbow label with manufacturing information in the color band
As with Label 83a. However, the songs that were previously credited to "Lenono Music" are now credited to "Blackwood Music Inc. o/b/o Lenono Music."

Released 1987-1988

Factories: Specialty



Label 88

Capitol

SW-3379

Purple label with small logo and "MANUFACTURED" rim print.

Released 1988-1990

Factories: Specialty

