

Having a Ball

Various Artists

First Appearance in Trade Magazines: October 13, 1958.

End LP-302

Along with the label's first album featuring the Chantels, End Records released a compilation of some of the hit singles that End had released recently, including most notably the Imperials' "Tears on My Pillow."

Label 58

End

LP-302

Gray label with "dog" logo. No print at the bottom of the label

Cover #1 pictures the artists and is in black-and white.

The original cover remained on the album at least until the middle of 1959.

The title appears as *Havin' a Ball* on all copies of the record.

There were two distinct pressings on Label 58, each with several minor label variations. On all copies of the album with the original title, the abbreviation RPM appears in a typeface that shows the M with vertical side-stems. I will call this **Label 58A**.



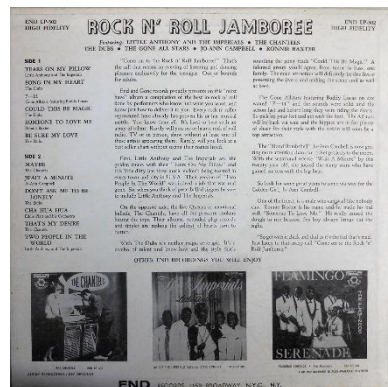
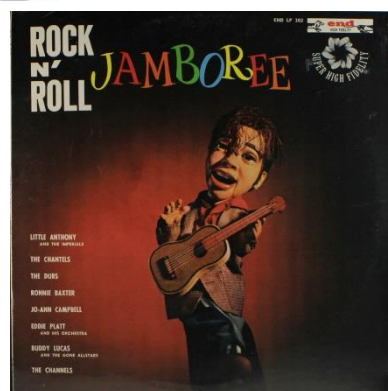
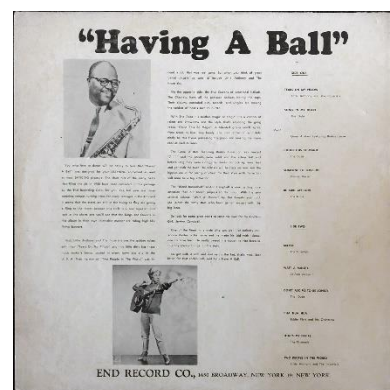
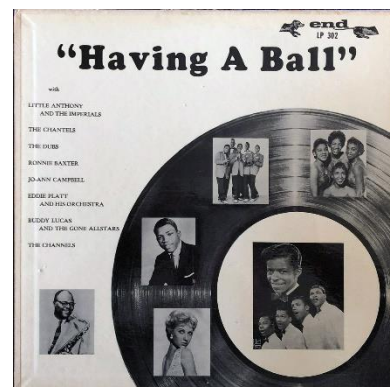
On side 1, copies **58A(i)** have 33 1/3 RPM basically left-aligned under END, and there is very little space between those two lines of text.

Copies **58A(ii)** have some blank space between the two lines, but otherwise look like 58A(i).

Copies **58A(iii)** have the line 33 1/3 RPM more indented.

In late spring 1959, Gone/End Records created the "Super High Fidelity" tag for its album releases. After the release of the initial Gone offering in the 5000 series, End put out *Flamingo Serenade*, the fourth album in the label's 300 series. According to the initial advertisements, that album was initially available only in mono in May, but a stereo release soon followed.

Cover #2 of End LP-302 shows an Elvis-like puppet on a color front cover. This cover came out in about the middle of 1959, for the back cover indicates that *Flamingo Serenade* was available in mono and stereo.

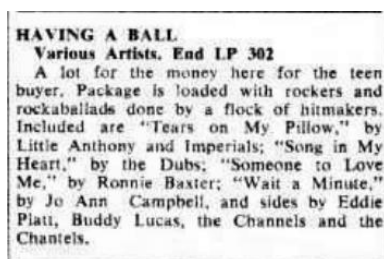


Initial copies of the album with its new title, *Rock n' Roll Jamboree*, used up the remaining stock of labels with the title *Havin' a Ball*. Shortly thereafter, there was a printing of labels with the new title using Label 58A.

The second printing of the labels have RPM in a typeface in which the M has slanted sides, as **M**. I refer to these copies as **Label 58B**.

Copies **58B(i)** have the R in ROCK over the blank space between END and 302.

Copies **58B(ii)** have the R in ROCK over the D of END.



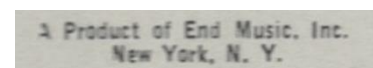
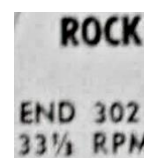
Label 58e

End

LP-302

Gray label with "dog" logo. "A Product of **End** Music, Inc" appears at the bottom.

This label style was used from February 1961 to July 1962. Gone Records added a similar statement to their labels at the same time. The additional manufacturing statement also appeared on singles from Gone/End.



No copies of LP-302 are extant with this label variation, but they may exist.

At the end of June 1962, Roulette Records president, Morris Levy, announced that his company had purchased Gone/End. By this time, End had released 15 LPs, numbered 301 through 315. After the merger, End released only one more album, with Roulette continuing to reissue the existing End catalog.

Label 58r

End

LP-302

Gray label with "dog" logo. "A Division of Roulette Records, Inc." appears at the bottom.

This label style was used from July 1962 until approximately summer 1964.

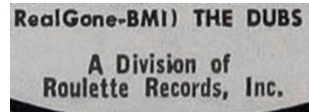
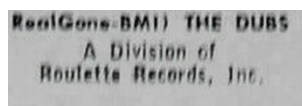
Labels 58r(i) through 58r(iii) have the added (Roulette) statement in a narrow typeface.

Copies **58r(i)** have the R in ROCK over the D in END.



Copies **58r(ii)** have the R in ROCK over the blank space after END. There is very little vertical space above the Roulette credit.

Copies **58r(iii)** have the R in ROCK over the blank space after END. There is a lot of vertical space above the Roulette credit.



Copies **58r(iv)** have the Roulette manufacturing statement in a wider typeface.

After the merger with Roulette, Gone released only one single (in 1965), while End went on to release four. At about the same time as the first new end single in summer 1964, End reissued some of the album catalog on its new label style. No copies of this LP are known to exist on Label 64 or Label 68, and no copies appear later on as Roulette releases. Therefore, it seems evident that the album went out of print prior to the summer of 1964.

These pages © 2020 Frank Daniels.

