

I'm Nobody's Baby

Jo-Ann Campbell

First Appearance in Trade Magazines: March 7, 1960

End LP-306

The most recent song on this compilation had been the B-side of an Imperials single that had come out in May (1959), but the single had not fared well. Most of the tracks had come out originally in 1958, making this collection a snapshot of End's group sounds from 1958-59.



Label 58

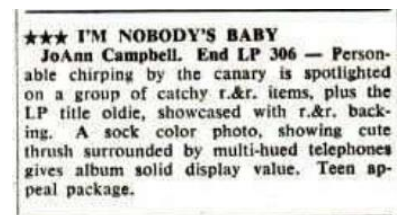
End

LP-306

Gray label with "dog" logo. No print at the bottom of the label



There were two distinct pressings on Label 58, each with minor label variations. On the first pressing, the abbreviation RPM appears in a typeface that shows the M with vertical side-stems. I will call this **Label 58A**.



Copies **58A(i)** have less space between the catalog number and record speed than copies **58A(ii)** have.

The second printing of the labels have RPM in a typeface in which the M has slanted sides, as **M**. I refer to these copies as **Label 58B**. No copies are known on this label.

Label 58e

End

LP-306

Gray label with "dog" logo. "A Product of End Music, Inc" appears at the bottom.

No copies are known on this label.

At the end of June 1962, Roulette Records president, Morris Levy, announced that his company had purchased Gone/End. By this time, End had released 15 LPs, numbered 301 through 315. After the merger, End released only one more album, with Roulette continuing to reissue the existing End catalog.

Label 58r

End

LP-306

Gray label with "dog" logo. "A Division of Roulette Records, Inc." appears at the bottom.

This label style was used from July 1962 until approximately summer 1964.

Copies **58r(i)** have the words at the bottom of the label in a narrow typeface.

Copies **58r(ii)** have the Roulette print in a wider typeface.



Label 85

Murray Hill

M6-3334

White label with "oval" logo.

Released in 1985.

The first covers on Murray Hill reissues featured the original End logo in the upper right; later covers used the Murray Hill logo.

