

## ***“Mary Had a Little Lamb”/“Little Woman Love”***

First appearance in trade magazines: June 3, 1972

### **Label wdj1**

Apple

1851

White label with “promotional record” and “not for sale.”

Artist credit reads “Paul McCartney.”



Factories: Los Angeles

### **Label c72**

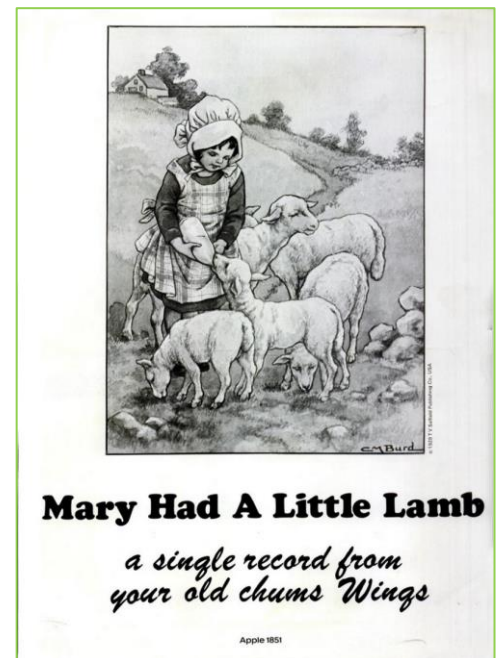
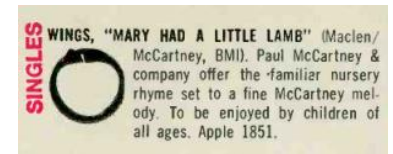
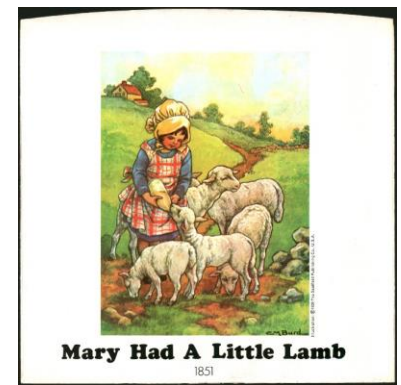
Apple

1851

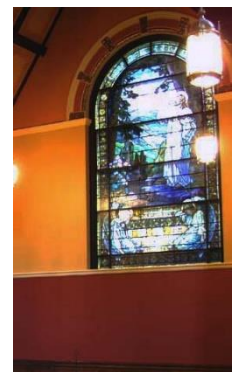
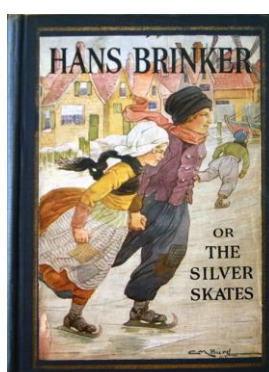
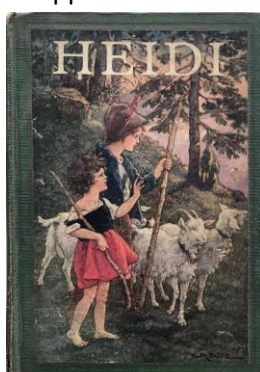
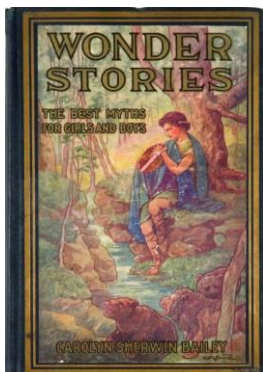
Custom label with “MFD. BY APPLE” in the rim print.



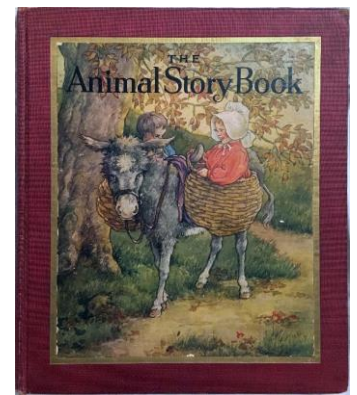
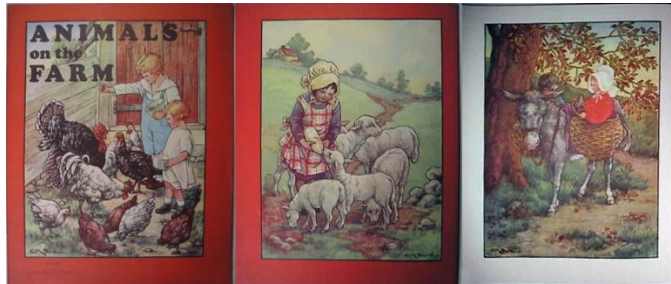
Factories: Los Angeles, Jacksonville, Winchester



For the label and sleeve design, Apple selected color drawings by Clara Miller Burd. Ms. Burd was a renowned illustrator and designer of stained-glass windows. For example, her design for New York’s West End Collegiate Church (368 West End Avenue) appeared in an issue of *The American Architect* in July, 1913. Her illustrations appeared in editions of such books as *Little Women*, *Hans Brinker*, and *Heidi*.

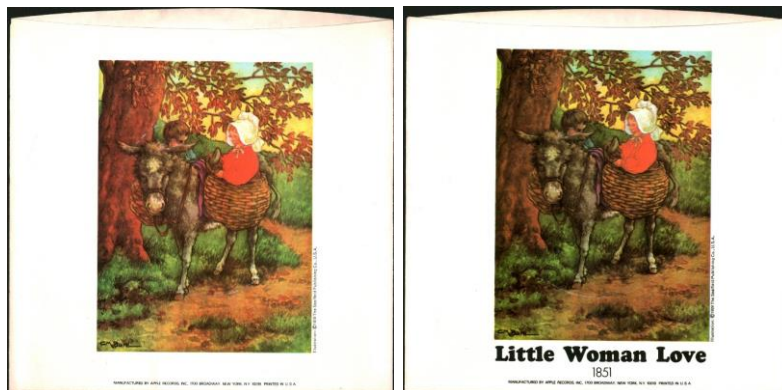


The images that Apple used first appeared in the 1928 publication of *The Animal Story Book* – written by Gladys E. Toon and published by Saalfeld Publishing. The stories and the illustrations were popular, appearing also in *Animals on the Farm* (1936, 1938) and other Saalfeld titles.



## Picture Sleeve

Apple 1851  
The picture sleeve features color prints on both sides.



Sleeve ps1 shows the A-side title on one side and only Apple's address on the other.  
Sleeve ps2 shows the A-side title on one side and the B-side title and catalog number, along with Apple's address, on the other side.

## Label 75m

Capitol 1851  
Black Capitol label with "MPL Communications" rim print.  
MPL logo on both sides; no "TIME" on label  
Factories: Los Angeles, Winchester  
No MPL logo; the word "TIME" appears on the label  
Factories: Jacksonville

